



Jefferson County Soil and Water Conservation District

625 SE Salmon Ave, Ste 6 Redmond, OR 97756
(541) 699-3170 www.jeffswcd.org

Learning and Sharing
June 2025

Let me know if you want to be ADDED or TAKEN OFF this email list! Ellen Hammond, ellen.hammond@jeffswcd.org.

June 20, noon

Jefferson SWCD Board Meeting Madras Airport

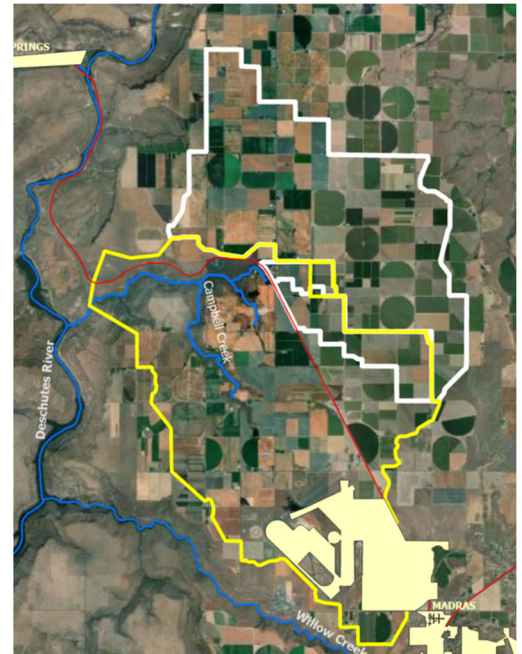
Learn about what the SWCD is doing for you. Contact [Kate Haarberg](#) for an agenda and to RSVP for lunch! Agendas and approved minutes are posted on our [website](#) when available.

Pesticide Stewardship Partnership (PSP) Grant

The SWCD received almost \$120,000 in funding for the next two years to implement projects identified by the Middle Deschutes PSP. The purpose of the MDPSP is to identify concerns related to pesticides in local waterways and address them in a voluntary manner. Projects include:

- Focused monitoring in the Campbell Creek drainshed and the mouths of Culver and Rattlesnake (Ferry Canyon) drains
- Focused outreach in the Campbell Creek and Rattlesnake (Ferry Canyon) drainages
- Electrical infrastructure for a pumpback pond and an upcoming pivot in the Campbell Creek watershed
- Cleaning sediment out of the pond at the head of Campbell Creek
- Identifying how imidacloprid is getting into the Culver Drain and addressing the causes
- Reimbursements for upgrading sprayer equipment

The MDPSP will start meeting again this fall to figure out how to move forward with these projects. For more information, contact [Ellen](#).



FREE Agricultural Windsocks for spraying!



Be the next person in Jefferson County to get a free windsock to gauge wind speed before spraying chemicals! They are calibrated from 2-12 mph. By showing wind speed and wind direction, you will be able to better judge spray drift area and distance. *Remember, to minimize drift, it is prohibited to spray when wind speed is >10 mph.*

These windsocks were purchased with a grant from Oregon's Pesticide Stewardship Partnership (PSP). The Middle Deschutes PSP thanks you for helping keep pesticides out of local waterways.

To get your own, including mounting hardware, contact Ryan at weedcoordinator@jeffswcd.org.

THAT'S IT FOR THIS MONTH