



Jefferson County Soil and Water Conservation District

625 SE Salmon Ave, Ste 6 Redmond, OR 97756
(541) 699-3170 www.jeffswcd.org

Learning and Sharing
February 2025

Let me know if you want to be ADDED or TAKEN OFF this email list! Ellen Hammond, ellen.hammond@jeffswcd.org.

No meeting!

Jefferson Co Ag Drought Resiliency Group

We have been implementing projects for Water Availability, Croplands, Ranchlands, and Public Outreach. Instead of a meeting to listen to someone read a bunch of Powerpoint slides, you are welcome to access our 2024 Update (only 16 pages!) at [DroughtPlan-2024Update](#). We will also summarize activities at our Annual Meeting (see below).

February 6, 2025; 11am-noon

Jefferson SWCD Annual Meeting

Farm Fair, Madras

Learn what the SWCD has been doing for you! Get the latest on our Pesticide Stewardship Partnership and Weed Programs. Stop by our booth throughout Farm Fair to chat with us :-). 2023-24 Annual Report at [2024 AnnualReport](#).

February 12, 2025; 9-11:30am

NRCS Local Work Group

Madras City Hall

This is an opportunity for you to learn about local NRCS programs and provide your thoughts on priorities.

February 25 Tuesday; noon

Jefferson SWCD Board Meeting

Madras Airport

Learn about what the SWCD is doing for you. Contact [Kate Haarberg](#) for an agenda and to RSVP for lunch! Agendas and approved minutes are posted on our [website](#) when available.

February 25 Tuesday; 8-4:30

Central Oregon Forage Seminar

Clover Bldg, Prineville

Join Central Oregon Hay Grower's Association and OSU Extension for this free event. It will be an excellent opportunity to learn about best practices and new research on hay and forage management from weeds to rodents to irrigation. The program is suitable for all experience levels, large acreage and small. All are welcome. Four ODA Pesticide Core recertification credits will be available. Refreshments and lunch will be provided. No registration required. For more information, visit: <https://beav.es/cofs>

MORE ON NEXT PAGE*

March 11, 2025; 1-3:30pm

Landowner Workshop: Soil Health Testing

Gary Richards' shop @ 2405 SW Culver Hwy

In June 2024, we had a field day presented by Ray Archuleta and Alejandro Castillo on soil health in croplands and rangelands. NRCS, COAREC, OSU Extension, and your SWCD are planning an ongoing conversation with you about soil health and other topics of interest, via workshops of 2-3 hours and field days at convenient times for local farmers and ranchers.



This workshop will feature

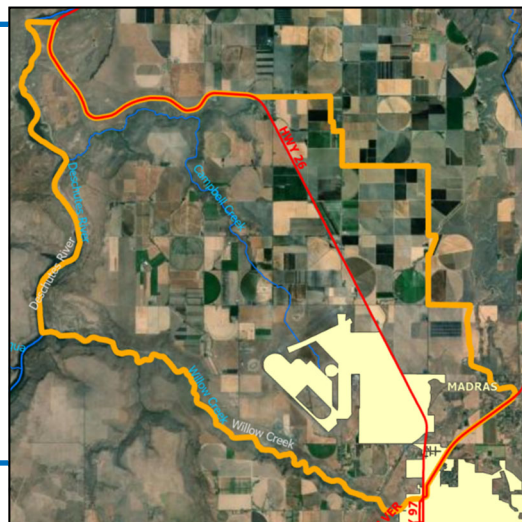
- Soil Health Principles
- Soil Tests: the standard and the newest options for soil health
- Discussion of the values from 3 of Gary's fields
- Landowner Panel: learn what your neighbors are doing with soil testing
- Next steps

RSVP at ellen.hammond@jeffswcd.org will be helpful, so we can provide enough chairs and snacks, but not necessary.

Deadline: March 20

\$: Campbell Creek Drainage (approximately)

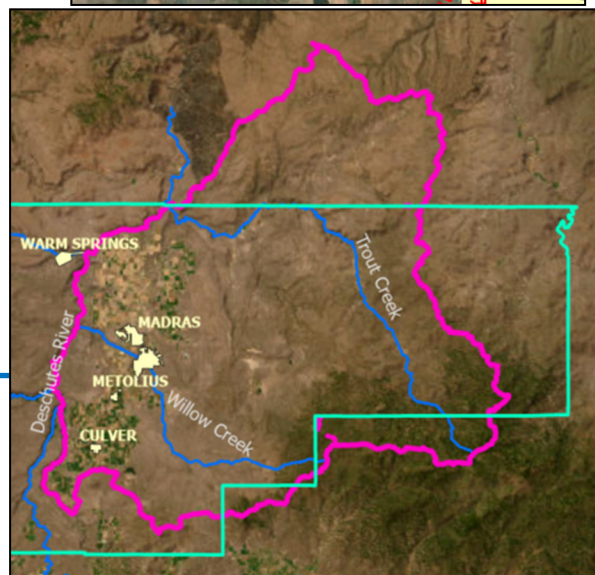
Do you farm within the orange boundary on the map? If so, you may be eligible for up to \$15,000 for projects that improve irrigation efficiency and/or water quality. You provide 25% match in cash, labor and/or equipment. We recently completed a project that included offstream livestock water, streamside plantings, and spraying of Rejuvra on invasive annual grasses. These funds are available relatively quickly with minimal paperwork for you. If interested, contact Ellen at ellen.hammond@jeffswcd.org ASAP!



Deadlines throughout the year, next deadlines March and June 2025

\$: Small Grants

Do you farm or ranch within the pink boundary on the map? If so, you may be eligible for up to \$15,000 for projects that enhance water resources and habitat for fish and wildlife. You provide 25% match in cash, labor and/or equipment. Recent projects included riparian plantings, juniper removal, upland seeding, irrigation efficiency. These funds are available relatively quickly with minimal paperwork for you. If interested, contact Ally at coordinator@middleeschuteswc.org.



Virtual Fencing

Last week's webinar was fantastic! It included NRCS, OSU Extension, and a couple of landowner panels, including two ranchers from Lake County.

You can access the recording of the workshop here: <https://youtu.be/kgtkHKQwgok>. You can find short videos and guides on foundations of virtual fence including training animals, collar deployment, and more on the Rangelands Gateway's Virtual Fence User Guide: <https://rangelandsgateway.org/virtual-fence>.