



Jefferson County Soil and Water Conservation District

625 SE Salmon Ave, Ste 6 Redmond, OR 97756
(541) 699-3170 www.jeffswcd.org

Learning and Sharing
March 2025

Let me know if you want to be ADDED or TAKEN OFF this email list! Ellen Hammond, ellen.hammond@jeffswcd.org.

Landowner Workshops on topics you care about!



COAREC, OSU Extension, your SWCD, NRCS, and other technical providers are planning an ongoing conversation with you about soil health, weed control, and other topics of interest, via workshops of 2-3 hours and field days at convenient times for farmers and ranchers across Jefferson County. We know this hasn't been done much in past years, so be prepared to receive information at events other than Farm Fair :-). Our first workshop last fall in Ashwood had 20 landowner attendees! Please let me know your ideas to make this a success.

March 11, Tuesday; 1-3:30pm

Landowner Workshop: Soil Health Testing
Gary Richards' shop @ 24305 SW Culver Hwy

Learn from your neighbors and OSU Extension and COAREC staff about:

- Soil Health Principles
- Soil Tests: the standard and the newest options for soil health
- Discuss results from 3 of Gary's fields under different cropping/management
- Landowners: learn what your neighbors are doing with soil testing
- Next steps

RSVP at ellen.hammond@jeffswcd.org, so we can provide enough chairs and snacks.



March 12 and 13; 10-1:30, lunch provided

Landowner Workshop: Weeds

March 12: Gary Richards' shop @ 4305 SW Culver Hwy

March 13: Jefferson County Public Works, 715 SE Grizzly Rd, Madras

Learn from your neighbors, OSU staff, and Tyler Jones (PBM sprayers) about:

- Spray equipment: latest technology, calibration, etc.
- Jefferson County Weed Program and ODA Class A Noxious Weeds
- Managing irrigation to reduce off-site movement of pesticides

RSVP at weedcoordinator@jeffswcd.org for lunch!

March 25, Tuesday; noon

Jefferson SWCD Board Meeting
Madras Airport

Learn about what the SWCD is doing for you. Contact [Kate Haarberg](mailto:Kate.Haarberg@jeffswcd.org) for an agenda and to RSVP for lunch! Agendas and approved minutes are posted on our [website](http://www.jeffswcd.org) when available.

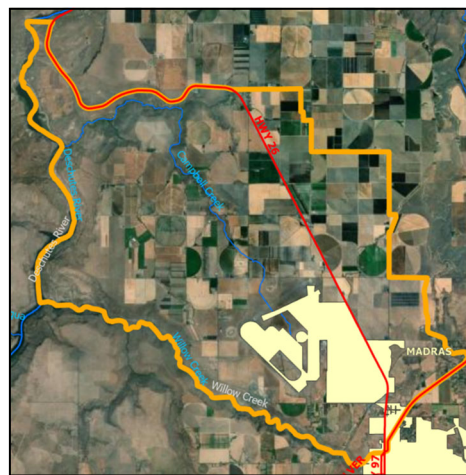
MORE ON NEXT PAGE*

Deadline: March 20

💰: Campbell Creek Drainage (approximately)

Do you farm within the orange boundary on the map? If so, you may be eligible for up to \$14,000 for projects that improve irrigation efficiency and/or water quality. You provide 25% match in cash, labor and/or equipment. We recently completed a project that included offstream livestock water, streamside plantings, and spraying of Rejuvra on invasive annual grasses.

Irrigation efficiency projects may also be eligible. These funds are available relatively quickly with minimal paperwork for you. If interested, contact Ellen at ellen.hammond@jeffswcd.org ASAP!

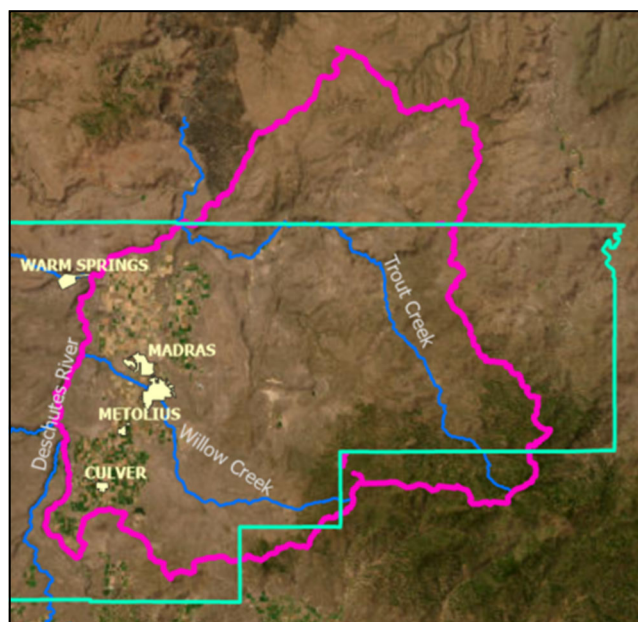


Deadlines throughout the year, next deadlines March and June 2025

💰: Small Grants

Do you farm or ranch within the pink boundary on the map? If so, you may be eligible for up to \$14,000 for projects that enhance watershed health and habitat for fish and wildlife. You provide 25% match in cash, labor and/or equipment. Recent projects included riparian plantings, juniper removal, upland seeding, and irrigation efficiency. These funds are available relatively quickly with minimal paperwork for you. If interested, contact Ally at coordinator@middledeschuteswc.org.

We received several requests last month after the newsletter went out. Some were ineligible (mostly due to the watershed health/habitat requirement) but Ally is following through on some others, e.g. reseeding range burnt by last year's wildfire west of Madras.



OSU Irrigation Water Management Needs Assessment

https://oregonstate.qualtrics.com/jfe/form/SV_07KGQcixKyjmoZg

This survey is designed to gather insights from stakeholders about their irrigation practices, water management challenges, and technology adoption. The goal is to collect data that will help improve research and outreach efforts to optimize irrigation efficiency and support decision-making for agricultural water management across Oregon. For more information, please contact Floyd Nicolas, the new irrigation specialist at COAREC, at nicolasf@oregonstate.edu or 352-204-6156.

Lateral 43 On-Farm Irrigation Water Management

In January, the Croplands Working Group asked the SWCD to assist farmers who are/will be receiving pressurized water from the piping of Lateral 43. The area consists of 7000 acres from Haystack Reservoir to Madras. The SWCD is partnering with COAREC and NUID to write a grant for a needs assessment for all interested landowners and to start writing conservation plans for irrigation water management, soil health, weeds, and other conservation activities of interest to the landowners. We will also seek funding for project implementation. Stay tuned!